

HOW TO: CONNECT VIA BLUETOOTH

>> Step 1: Download "LED Space" App

1. Scan the QR code below or search and download the LED Space app in App Store or Google Play.
2. Plug in the product to power on and turn on your phone's Bluetooth.

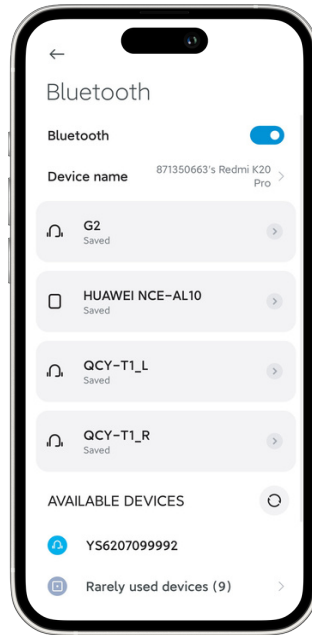
You will need a power bank with USB Type-A (not included).



ios



Google

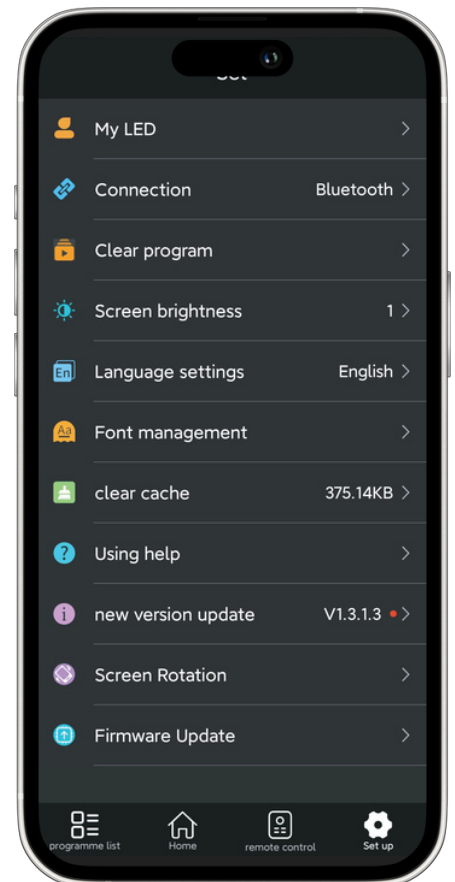
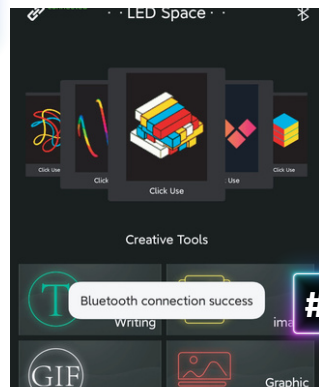
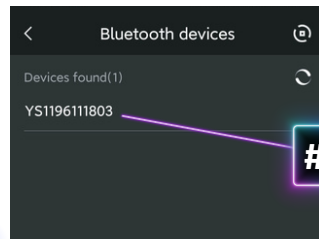


SETTINGS FUNCTIONS

1. **My LED:** About connected LED screen
2. **Connections:** Switch the connection method to match the version of your LED screen
3. **Clear Program:** Clear the program on the current screen
4. **Screen Brightness:** Set the brightness of the LED screen
5. **Language Settings:** Switch between 13 languages
6. **Font Management:** View downloaded fonts
7. **Clear Cache:** Clear software cache
8. **Using Help:** FAQ and function introduction
9. **New Version Update:** Check to update the latest version of the app
10. **Screen Rotation:** Rotate program display
11. **Firmware Update:** Update LED screen built-in program

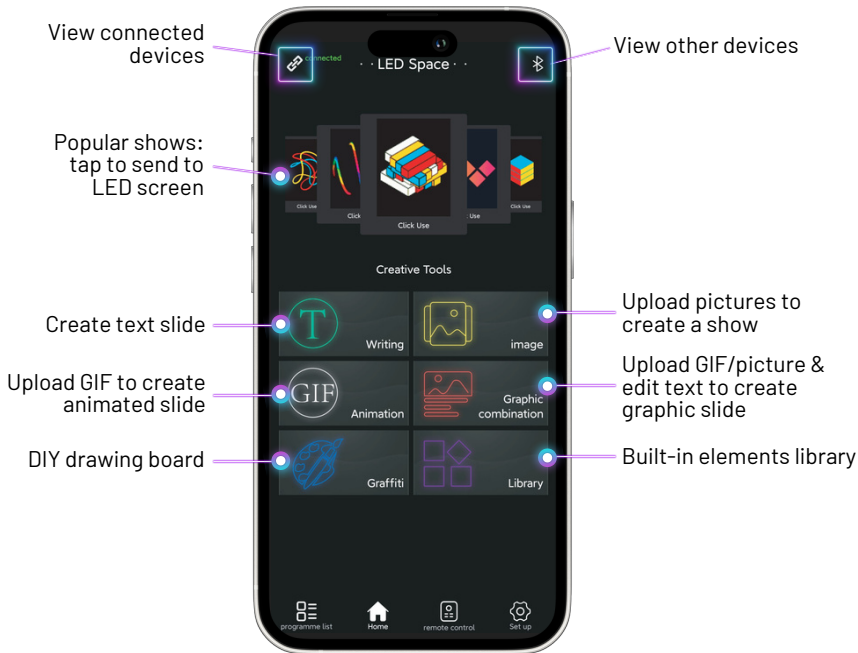
>> Step 2: Connect Phone To Device

1. Keep your phone's Bluetooth on & open LED Space.
2. Tap Bluetooth icon for connection.
3. Tap Find Device to select your screen.
4. Tap your device number to connect.
5. The connection is successful!



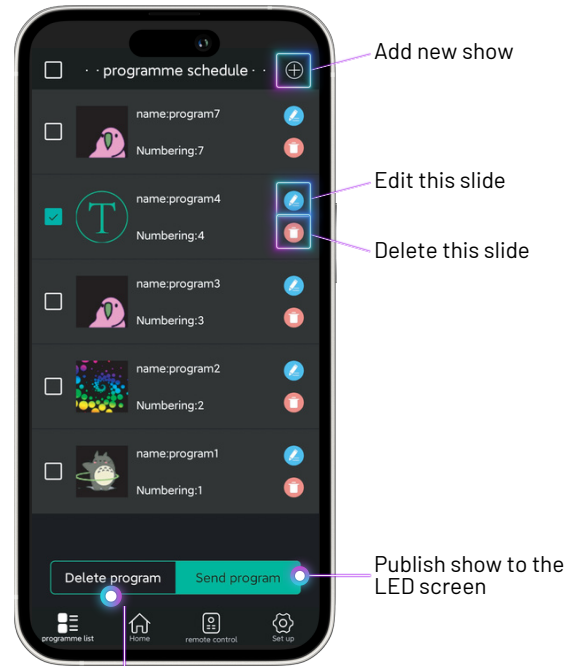
HOW TO: FUNCTIONS

>> Home



>> Programme List

Remote control programs, published, and saved programs can be found in the program list.



Delete selected slide from show

>> Remote Control



Tap the program thumbnail to edit

